

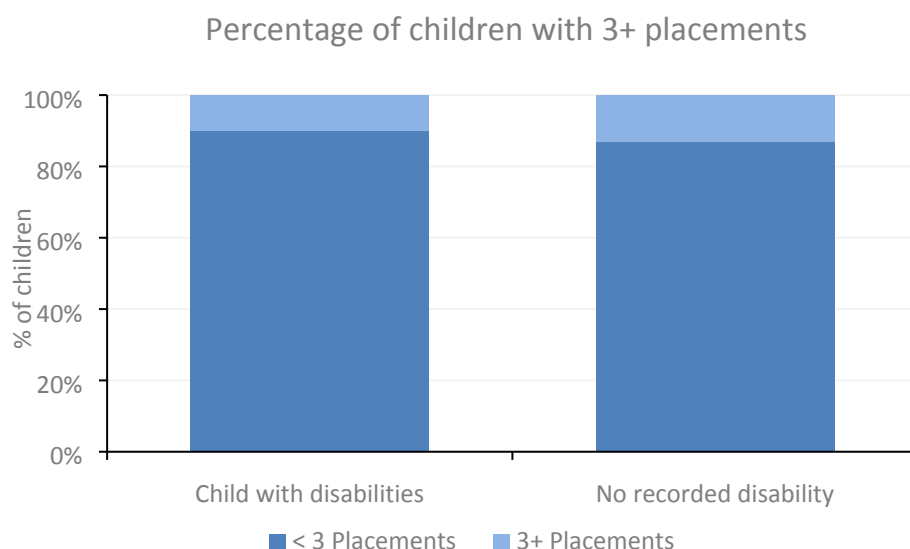
3+ Placements

17 June 2016

Data obtained from the Management Information Looked After Children Report as at 15 June 2016.

Children With Disabilities

Children with disabilities were defined as any child with a recorded disability on Liberi, regardless of the nature of the disability.

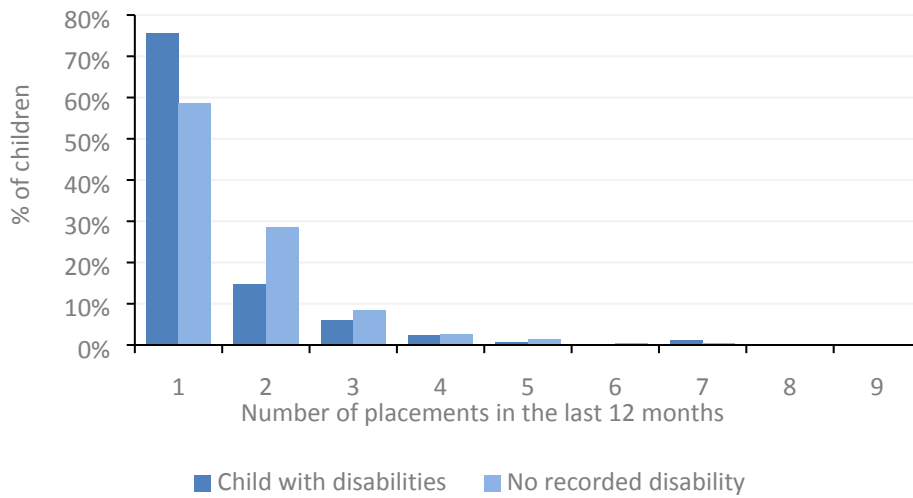


	< 3 Placements		3+ Placements		Total
	Volume	%	Volume	%	
Child with disabilities	154	90.1%	17	9.9%	171
No recorded disability	1840	87.0%	275	13.0%	2115
Total	1994	87.2%	292	12.8%	2286

The proportion of children with disabilities with less than 3 placements in the last 12 months (90.1%) was slightly higher than that for children without disabilities (87.0%).

However, a breakdown by the number of placements showed that children with disabilities had a higher rate of just one placement in the last 12 months and children without disabilities had a higher rate of 2 placements in the last 12 months. This suggests that children with disabilities have a slightly greater placement stability than children without disabilities. But children with disabilities also had a longer average care duration of 1383 days compared to 899 days for children without disabilities which could also influence then number of placements.

Number of placements and disability



Placements in the last 12 months	Child with disabilities		No recorded disability		Grand Total
	Volume	%	Volume	%	
1	129	75.4%	1239	58.6%	1368
2	25	14.6%	601	28.4%	626
3	10	5.8%	178	8.4%	188
4	4	2.3%	54	2.6%	58
5	1	0.6%	28	1.3%	29
6	0	0.0%	7	0.3%	7
7	2	1.2%	6	0.3%	8
8	0	0.0%	1	0.0%	1
9	0	0.0%	1	0.0%	1
Grand Total	171	100.0%	2115	100.0%	2286

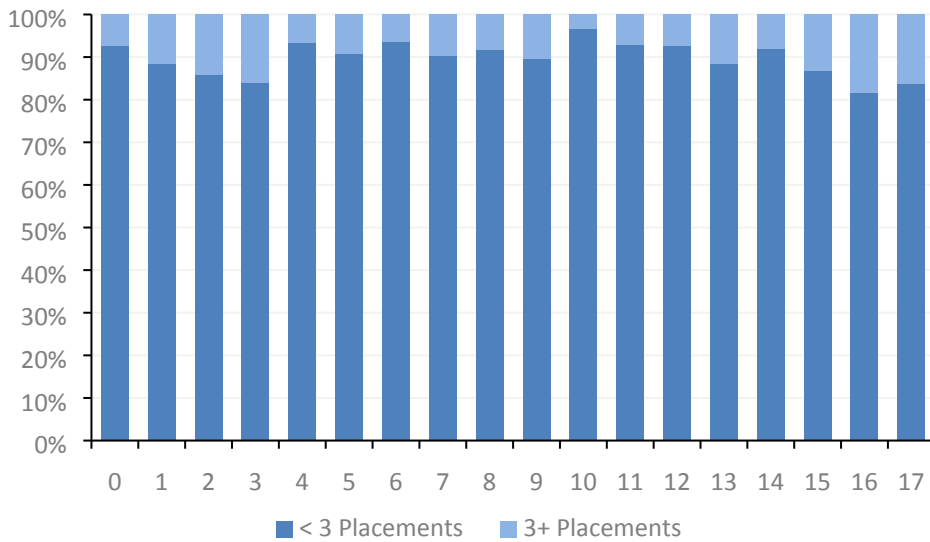
Three quarters of children with disabilities had one placement in the last 12 months (75.4%) compared to 58.6% for children without disabilities.

Children with disabilities within the disabled children’s teams had even greater stability with only 4.9% having 3 or more placements in the last 12 months.

	< 3 Placements		3+ Placements		Total
	Volume	%	Volume	%	
Disabled Children’s Teams	97	95.1%	5	4.9%	102

Age Profile

3+ placements by current age



Current Age	< 3 Placements		3+ Placements		Total
	Volume	%	Volume	%	
0	50	92.6%	4	7.4%	54
1	23	88.5%	3	11.5%	26
2	24	85.7%	4	14.3%	28
3	26	83.9%	5	16.1%	31
4	28	93.3%	2	6.7%	30
5	29	90.6%	3	9.4%	32
6	44	93.6%	3	6.4%	47
7	55	90.2%	6	9.8%	61
8	67	91.8%	6	8.2%	73
9	69	89.6%	8	10.4%	77
10	87	96.7%	3	3.3%	90
11	92	92.9%	7	7.1%	99
12	113	92.6%	9	7.4%	122
13	106	88.3%	14	11.7%	120
14	157	91.8%	14	8.2%	171
15	197	86.8%	30	13.2%	227
16	327	81.5%	74	18.5%	401
17	500	83.8%	97	16.2%	597
Total	1994	87.2%	292	12.8%	2286

16 and 17 year olds saw the highest rate of 3+ placements in 12 months. Approximately half of this age group were in leaving care accommodation so would likely have had at least one move in the last 12 months as part of their care plan.

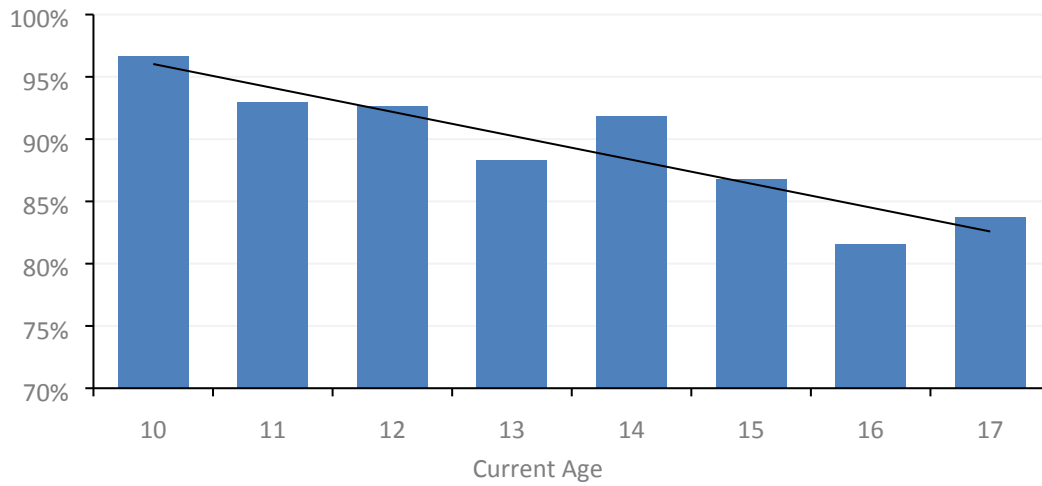
The second highest rate of 3+ placements was seen in 3 and 4 year olds. However, it is worth noting that this age group accounted for a small percentage of LAC, just 2.7% or 61 children, with 7 of these having 3+

placements in the last 12 months. The small size of this group makes it difficult to draw any conclusions but it may be an area worth monitoring.

10 year olds saw the lowest rate of 3+ placements in the last 12 months.

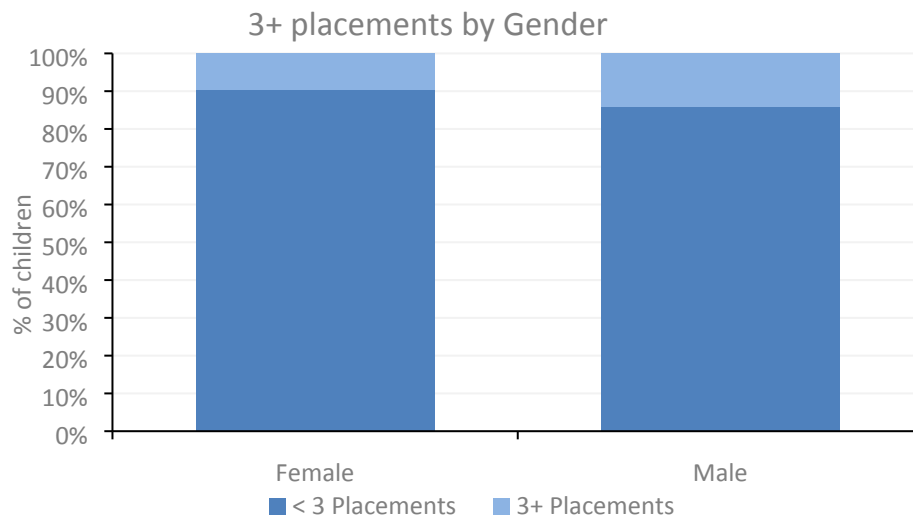
From the ages of 10 to 17 the proportion of children with less than 3 placements decreased with age.

3+ placements for 10 to 17 year olds trend



There was no trend found in children aged 0 to 9 to indicate a linear relationship between age and having 3+ placements in 12 months.

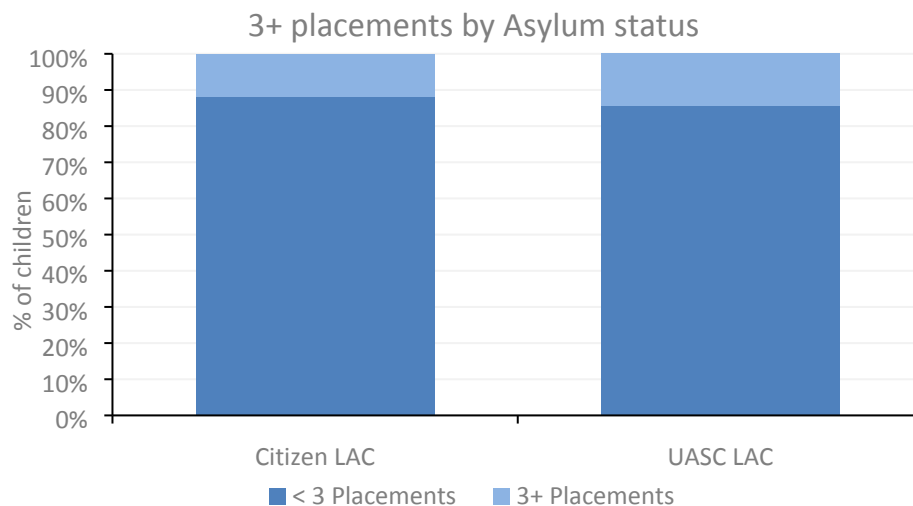
Gender Profile



Gender	< 3 Placements		3+ Placements		Total
	Volume	%	Volume	%	
Female	616	90.3%	66	9.7%	682
Male	1378	85.9%	226	14.1%	1604
Total	1994	87.2%	292	12.8%	2286

Females had a lower rate of 3+ placements (9.7%) than males (14.1%).

Asylum Profile

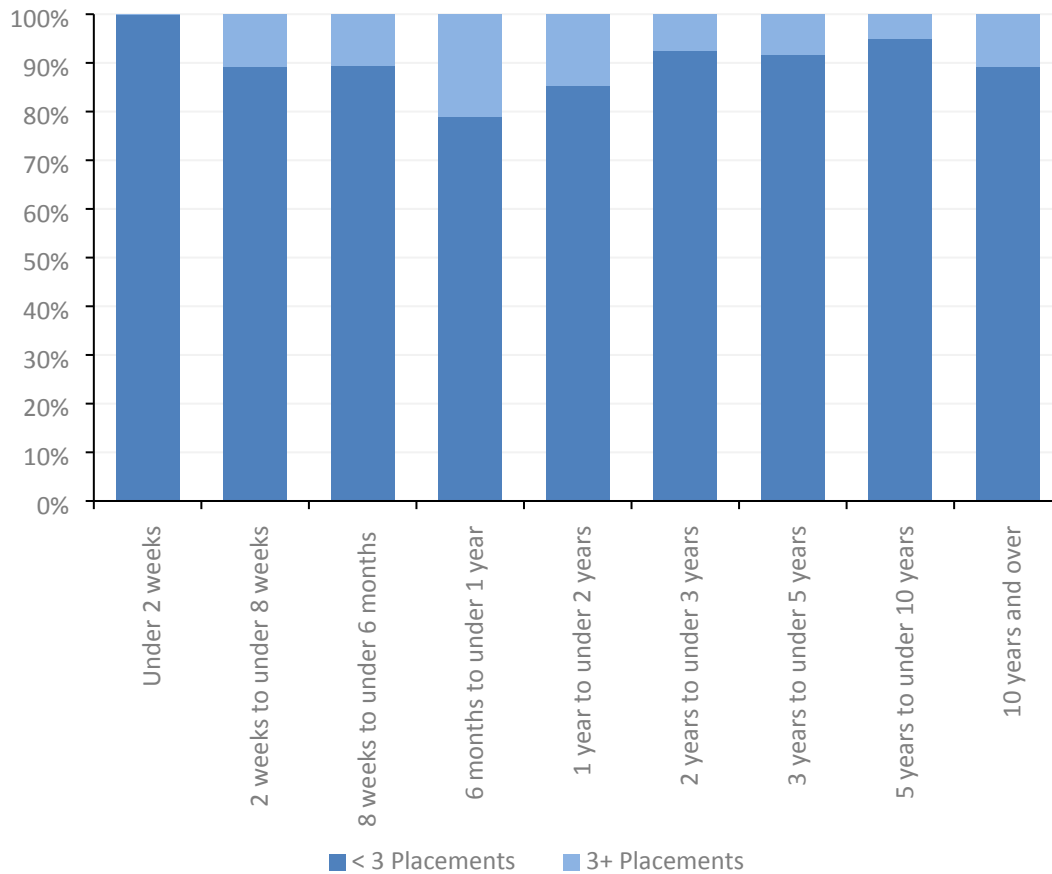


Asylum Flag	< 3 Placements		3+ Placements		Total
	Volume	%	Volume	%	
Citizen LAC	1269	88.2%	170	11.8%	1439
UASC LAC	725	85.6%	122	14.4%	847
Total	1994	87.2%	292	12.8%	2286

UASC had a slightly higher rate of 3+ placements (14.4%) than citizen LAC (11.8%).

Period of Care Duration

3+ placements by period of care duration



Period of Care Band	< 3 Placements		3+ Placements		Total
	Volume	%	Volume	%	
Under 2 weeks	12	100.0%	0	0.0%	12
2 weeks to under 8 weeks	82	89.1%	10	10.9%	92
8 weeks to under 6 months	237	89.4%	28	10.6%	265
6 months to under 1 year	524	79.0%	139	21.0%	663
1 year to under 2 years	301	85.3%	52	14.7%	353
2 years to under 3 years	183	92.4%	15	7.6%	198
3 years to under 5 years	264	91.7%	24	8.3%	288
5 years to under 10 years	341	95.0%	18	5.0%	359
10 years and over	50	89.3%	6	10.7%	56
Total	1994	87.2%	292	12.8%	2286

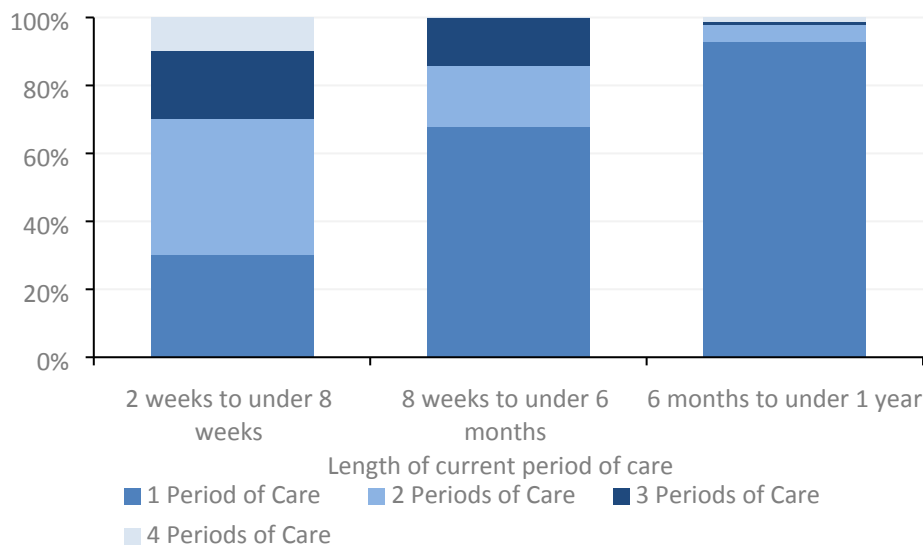
Children with a current period of care between 6 months and 1 year had the highest rate of 3+ placements.

Children who had been in care between 5 and 10 years had the lowest rate of 3+ placements, with 95.0% of children having less than 3 placements in the last 12 months.

The period of care duration is only the duration of the current episode, whereas the number of placements is over the last 12 months, even if this spans more than one period of care. Any children whose current period of care was less than 1 year could have had placements included for previous periods of care.

A breakdown of those children who had been in care for less than a year and had three or more placements showed that 70% of children with 3 or more placements who had been in care for between 2 and 8 weeks had more than one period of care during the 12 month period.

However, the proportion of children with 3 or more placements who had been in care for between 6 months and 1 year and had multiple periods of care is low at just 2.2%. Therefore the high rate of placements for children with this care duration cannot be attributed to multiple periods of care.



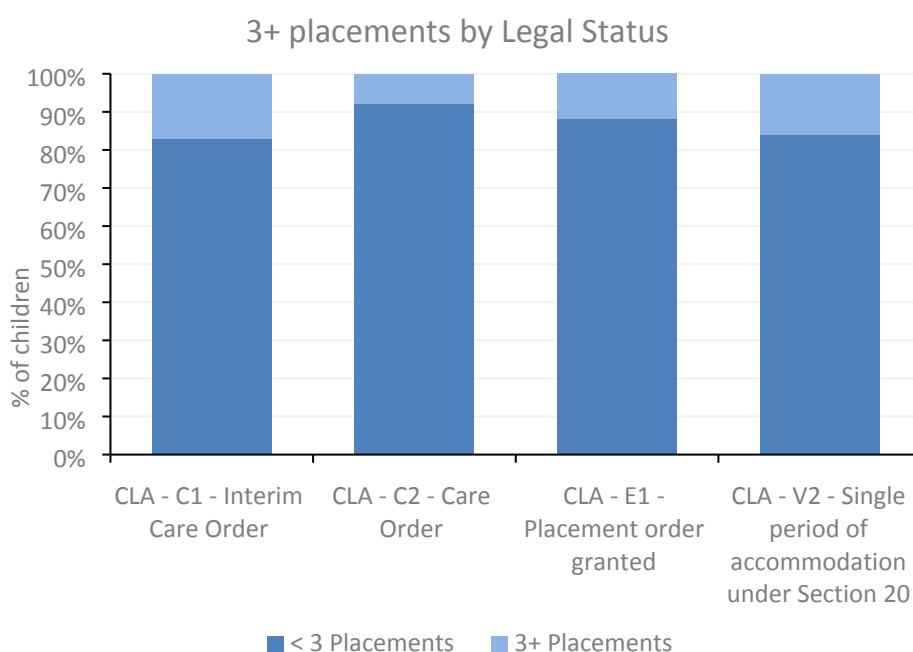
Period of Care Band	1 Period of Care		2 Periods of Care		3 Periods of Care		4 Periods of Care		Total
	Volume	%	Volume	%	Volume	%	Volume	%	
2 weeks to under 8 weeks	3	30.0%	4	40.0%	2	20.0%	1	10.0%	10
8 weeks to under 6 months	19	67.9%	5	17.9%	4	14.3%		0.0%	28
6 months to under 1 year	129	92.8%	7	5.0%	1	0.7%	2	1.4%	139
Total	151	85.3%	16	9.0%	7	4.0%	3	1.7%	177

40 of the 2286 LAC had multiple periods of care in the last 12 months, which accounts for just 1.7%. 26 of the children with multiple periods of care had 3+ placements in the last 12 months, so the small number of these cases is unlikely to have a significant effect on any other groupings.

Legal Status

Children in care under a Care Order had the highest rate of less than 3 placements (92.2%), section 20s have the lowest rate (84.0%).

However, there were differences in the profiles of children with different legal statuses. Children on care orders had a higher average period of care duration, whereas children on interim care orders had a particularly low average period of care duration. The average age for the different legal statuses also varied, so the difference in the number of placements may be related to factors other than the legal status itself.



Note: children with a Legal status of J1 and L1 were excluded from the graph due to the low numbers

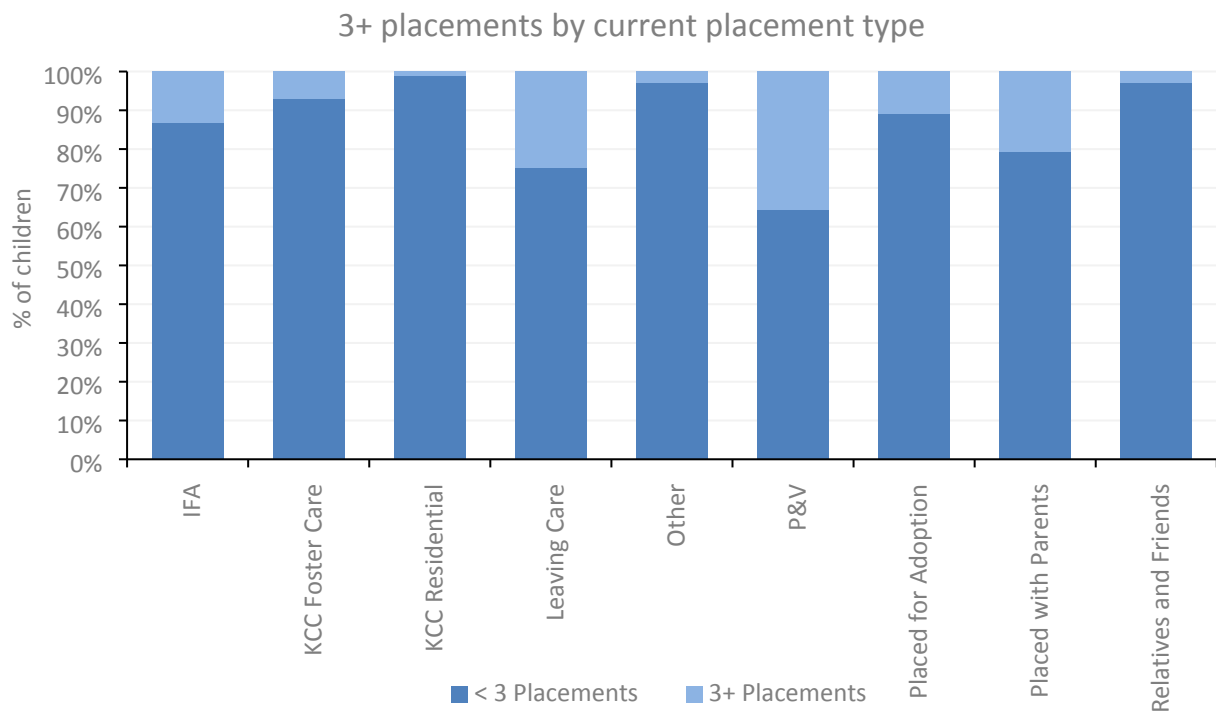
Legal Status	< 3 Placements		3+ Placements		Total
	Volume	%	Volume	%	
CLA - C1 - Interim Care Order	146	83.0%	30	17.0%	176
CLA - C2 - Care Order	810	92.2%	69	7.8%	879
CLA - E1 - Placement order granted	74	88.1%	10	11.9%	84
CLA - V2 - Single period of accommodation under Section 20	959	84.0%	182	16.0%	1141
CLA - J1 - In local authority on remand, or committed for trial or sentence	2	66.7%	1	33.3%	3
CLA - L1 - Under police protection, in local authority accommodation	3	100.0%	0	0.0%	3
Total	1994	87.2%	292	12.8%	2286

Legal Status	Average of Period of Care Duration in days
CLA - C1 - Interim Care Order	176.1
CLA - C2 - Care Order	1786.0

CLA - E1 - Placement order granted	575.8
CLA - V2 - Single period of accommodation under Section 20	427.9
All Legal Statuses	937.5

Legal Status	Average Age
CLA - C1 - Interim Care Order	5.7
CLA - C2 - Care Order	12.1
CLA - E1 - Placement order granted	3.7
CLA - V2 - Single period of accommodation under Section 20	15.6
All Legal Statuses	13.0

Current Placement Type



Placement Grouping	< 3 Placements		3+ Placements		Total
	Volume	%	Volume	%	
IFA	308	86.8%	47	13.2%	355
KCC Foster Care	1009	92.8%	78	7.2%	1087
KCC Residential	90	98.9%	1	1.1%	91
Leaving Care	379	75.0%	126	25.0%	505
Other	32	97.0%	1	3.0%	33
P&V	47	64.4%	26	35.6%	73
Placed for Adoption	41	89.1%	5	10.9%	46
Placed with Parents	23	79.3%	6	20.7%	29
Relatives and Friends	65	97.0%	2	3.0%	67
Total	1994	87.2%	292	12.8%	2286

Children in P&V placements had the highest rate of 3+ placements in the last 12 months.

Children in Leaving Care placements or placed with parents also had fairly high rates of 3+ placements of 25.0% and 20.7% respectively. However, these placements may be planned and in line the child's care plan to either prepare for independence or return home.